



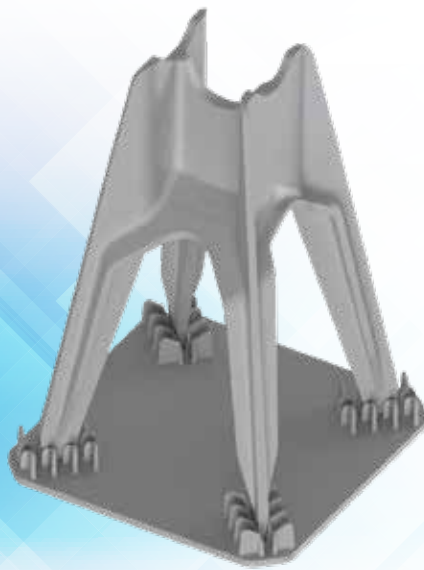
BA *Concrete*
Products

TOWER CHAIRS



- *Tilt-up / Exposed concrete applications*
- *Mininal Footprint*
- *Maximum concrete consolidation*
- *2 sizes per chair / low inventory*
- *850 LB load rating*

*Sand plate
option*



Tower Chair Series

Part No.	Chair Height	Rebar Size	Box Count	Skid Count	Boxes per Skid
RTC-100	1" - 1.25"	#3 - #10	1,000	36,000	36
RTC-150	1.5" - 1.75"		700	25,200	36
RTC-200	2" - 2.25"		400	14,400	36
RTC-250	2.5" - 2.75"		350	12,600	36
RTC-300	3" - 3.5"	#3 - #10	250	7,000	28
RTC-325	3.25" - 3.75"		200	5,600	28
RTC-400	4" - 4.5"		175	4,900	28
RTC-425	4.25" - 4.75"		150	4,200	28
RTC-500	5" - 5.5"	#3 - #10	120	3,360	28
RTC-525	5.25" - 5.75"		100	2,800	28
RTC-600	6" - 6.5"		150	3,000	20
RTC-625	6.25" - 6.75"		125	2,500	20
RTC-700	7" - 7.5"	#3 - #10	100	2,000	20
RTC-725	7.25" - 7.75"		90	1,800	20
RTC-800	8" - 8.5"		80	1,600	20
RTC-825	8.25" - 8.75"		70	1,400	20



**NEW
DESIGN**

Slab Bolsters



QWIK-LOK SLAB BOLSTER



Plastic rebar chair lengths for cost efficient reinforcement. Ends are connectible achieving any lengths desired for large scale construction projects.

- *Twelve size options available*
 $\frac{3}{4}$ ", 1", 1 $\frac{1}{4}$ ", 1 $\frac{1}{2}$ ", 1 $\frac{3}{4}$ ", 2", 2 $\frac{1}{4}$ ", 2 $\frac{1}{2}$ ", 2 $\frac{3}{4}$ ", 3", 3 $\frac{1}{2}$ ", and 4".
- *Individual pieces easily snap together to form continuous lengths*
- *New design allows you to separate pieces as well if required*
- *Patented Canada & USA*
- *Constructed out of a durable non-corrosive polycarbonate material*
- *Points on legs ensure minimal surface contact*
- *Manufactured in 2.5 ft, 5 ft, & 10 ft lengths*



Bolster Chair Series

Part No.	Chair Height	Box Count	Box Skid Count	Skid Weight	Boxes per Skid
CRC-075	0.75"	375 ft	9,000 ft	816 lbs	24
CRC-100	1"	300 ft	7,200 ft	744 lbs	24
CRC-125	1.25"	250 ft	6,000 ft	720 lbs	24
CRC-150	1.5"	225 ft	5,400 ft	689 lbs	24
CRC-175	1.75"	200 ft	4,800 ft	660 lbs	24
CRC-200	2"	188 ft	4,500 ft	665 lbs	24
CRC-250	2.5"	150 ft	3,600 ft	583 lbs	24
CRC-275	2.75"	150 ft	3,600 ft	600 lbs	24
CRC-300	3"	125 ft	3,000 ft	528 lbs	24

**boxed = 2.5 FT lengths

Part No.	Chair Height	Bundle Count LIN FEET	Skid Count LIN FEET	Bundles per Skid	Skid Weight
CRC-075P	0.75"	100	9,100	91	1480 lbs
CRC-100P	1"	100	7,200	72	1530 lbs
CRC-125P	1.25"	100	6,000	60	1425 lbs
CRC-150P	1.5"	100	5,000	50	1326 lbs
CRC-175P	1.75"	100	4,500	45	1300 lbs
CRC-200P	2"	100	4,000	40	1314 lbs
CRC-250P	2.5"	50	3,200	64	1200 lbs
CRC-275P	2.75"	50	3,000	60	1230 lbs
CRC-300P	3"	50	2,500	50	1040 lbs

**bundled = 5 FT lengths

***bundled = for 10 FT length info contact us or visit our website

- 5ft length skids are double stacked
- 10ft Skids are triple stacked



2.5 ft. lengths



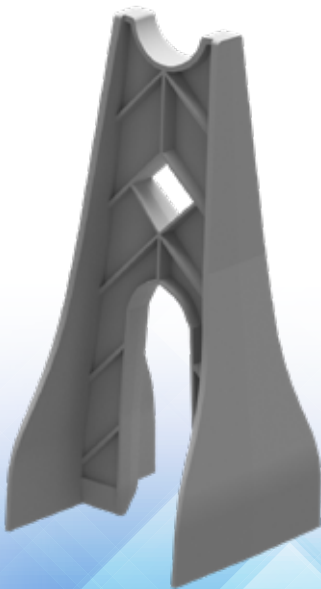
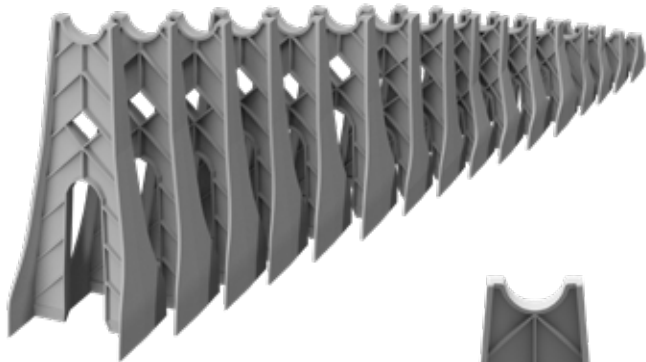
5 ft. lengths



10 ft. lengths



H-Chairs



NEW
Sand plate
option



These rebar chairs offer the strongest rebar support available. Specifically designed to support heavy reinforcement in concrete foundations, heavy slabs and also specialty structures. Constructed out of a durable non-corrosive plastic they cannot change shape and will provide uniform concrete cover. Chairs will accept any bar diameter.

Visit our website for complete list of sizing specification and also shipping quantities

- 1" to 11" sizing ($\frac{1}{2}$ " increments)
- Accepts from #3 - #10 rebar
- 850 lbs weight capacity
- Wide base allows for solid footing
- Constructed out of a durable non-corrosive plastic
- DOT approved Canada & USA
- 100% Recycled Polycarbonate Plastic
- Made in Canada



H Chair Series

Part. No.	Chair Height	Rebar Size	Bag Count	Skid Count	Bags per Skid	Skid Weight
RBH-SP <i>*SandPlate</i>	ALL SIZES		500	13,000	26	1,200 skid weight
RBH-1	1"		500	32,000	64	1267 lbs
RBH-125	1.25"	#3-#10	500	32,000	64	1306 lbs
RBH-15	1.5"	FOR ALL	400	25,600	64	806 lbs
RBH-2	2"	SIZES	350	22,400	64	685 lbs
RBH-25	2.5"		300	19,200	64	800 lbs
RBH-275	2.75"		250	16,000	64	608 lbs
RBH-3	3"		375	9,750	26	690 lbs
RBH-35	3.5"	#3-#10	375	9,750	26	735 lbs
RBH-4	4"	FOR ALL	300	7,800	26	754 lbs
RBH-45	4.5"	SIZES	300	7,800	26	832 lbs
RBH-5	5"		200	5,200	26	796 lbs
RBH-55	5.5"		180	4,680	26	780 lbs
RBH-6	6"		140	3,640	26	637 lbs
RBH-65	6.5"		130	3,380	26	588 lbs
RBH-7	7"		90	2,340	26	692 lbs
RBH-75	7.5"	#3-#10	85	2,210	26	580 lbs
RBH-8	8"	FOR ALL	80	2,080	26	572 lbs
RBH-85	8.5"	SIZES	75	1,950	26	567 lbs
RBH-9	9"		50	1,300	26	538 lbs
RBH-95	9.5"		50	1,300	26	551 lbs
RBH-10	10"		50	1,300	26	570 lbs
RBH-105	10.5"		50	1,300	26	580 lbs
RBH-11	11"		45	1,170	26	550 lbs

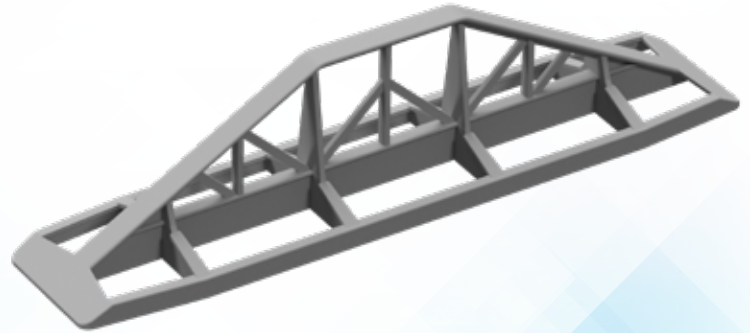


Slider Series

CS Series Column Slider

This chair with its ridged build has the ability to slide a moving component into a stationary component, a 40mm (1½") column or beam guiding chair.

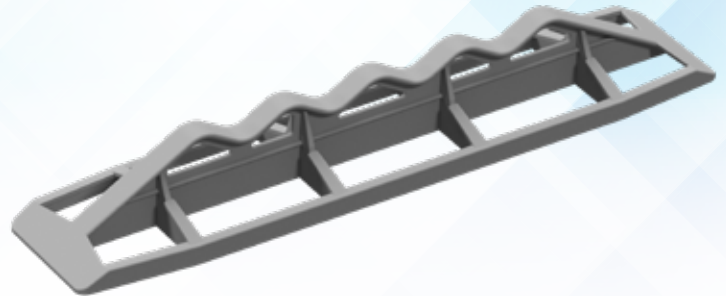
- *Five size options available - 1½", 2", 2½", 3", and 3½"*
- *Available in two different composite types, for either regular or higher strength application*
- *Provides greater stability than wheel chairs*



CS Slider

CSR Series Column Slider

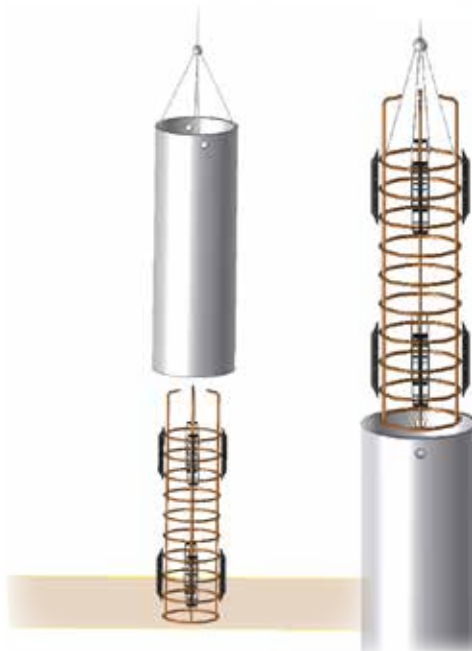
- *Five size options available - 1½", 2", 2½", 3", and 3½"*
- *New pointed design ensures minimal surface contact*

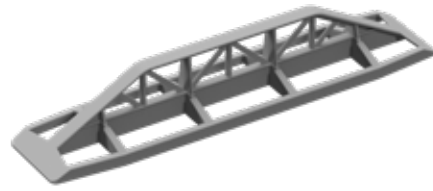


CSR Slider

All Column Slider

- *100% Recycled Plastic*
- *Made in Canada*

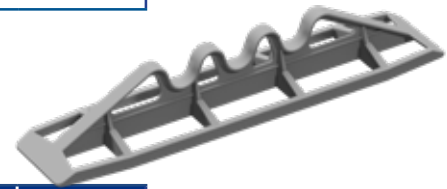




Column Slider Series

Part No.	Chair Height	Box Count	Box Weight	Skid Count	Skid Weight	Boxes per Skid
CS-150P	1.5"	84	20.5 lbs	2,016	492 lbs	24
CS-200P	2"	75	20 lbs	1,800	480 lbs	24
CS-250P	2.5"	60	20 lbs	1,440	480 lbs	24
CS-300P	3"	50	22.2 lbs	1,200	533 lbs	24
CS-350P	3.5"	45	22 lbs	1,080	528 lbs	24

* Heavy Duty option available



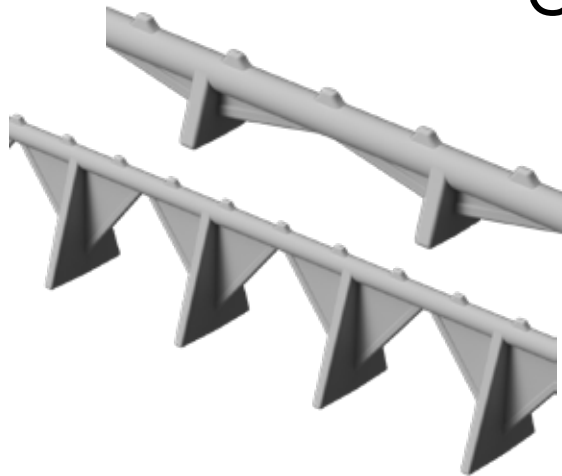
Column Slider Ridged Series

Part No.	Chair Height	Box Count	Box Weight	Skid Count	Skid Weight	Boxes per Skid
CSR-150P	1.5"	84	20 lbs	2,016	480 lbs	24
CSR-200P	2"	75	20 lbs	1,800	480 lbs	24
CSR-250P	2.5"	60	20 lbs	1,440	480 lbs	24
CSR-300P	3"	50	22.5 lbs	1,200	540 lbs	24
CSR-350P	3.5"	45	22 lbs	1,080	528 lbs	24

* Heavy Duty option available



**NEW
PRODUCT
COMING SOON!**



Tuff-Back Bolster Chair

Simplistic plastic rebar chair lengths for cost efficient reinforcement.

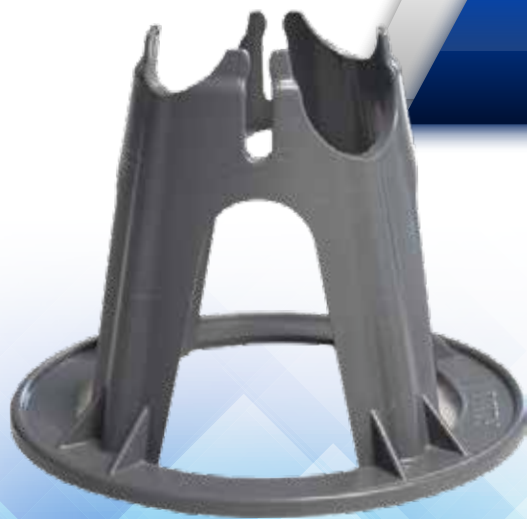
- *Heavy Duty Beam bolster with Steel Rod Inserted*
- *34", 1", 112", 2", and 21/2" cover height*
- *3,000 lbs weight capacity*
- *High load strength and Impact resistant*
- *Manufactured in 30" lengths and crimped together to 60" Length*
- *Can be separated at crimp for individual use*

**NEW
PRODUCT
COMING SOON!**

HD Bolster Chair



Cone Chairs



These rebar chairs offer the strongest rebar support available. Constructed out of a durable non-corrosive plastic they cannot change shape and will provide uniform concrete cover.

- Six size options available. 1" - 1½", 1½" - 2", 2½" - 3", 3½" - 4", 4½" - 5" and 5½" - 6"
- Chairs will accept bars up to 1" in diameter at two height options per chair
- Constructed out of a extremely durable polycarbonate resin.
- DOT approved Canada & USA
- Wide base allows for solid footing
- Compact stacking
- Now accepts 1/8" - 3/16" mesh
- 100% Recycled Plastic
- Made in Canada



RC-03



RC-02



RC-01



Cone Chair Series

Part No.	Available Colours	Chair Height	Rebar Size	Box Count	Box Weight	Skid Count	Skid Weight	Boxes per Skid
RC-001	Grey	1 - 1.5"	#3-#8	300	20 lbs	10,800	880 lbs	36
RC-01	Grey	1.5 - 2"	#3-#8	250	20 lbs	10,000	880 lbs	40
RC-02	Grey	2.5 - 3"	#3-#8	250	28 lbs	9,000	1008 lbs	36
RC-03	Grey	3.5 - 4"	#3-#8	160	30 lbs	5,120	960 lbs	32
RC-04	Grey	4.5 - 5"	#3-#8	160	35 lbs	4,480	1,120 lbs	28
RC-05	Grey	5.5" - 6"	#3-#8	120	30 lbs	3,360	1,120 lbs	28



**NEW
PRODUCT**



Locking Wheel Chair

- *Ratcheting Lock System*
- *Available in 1", 1½", 2" & 3" cover and accommodate many different sized bar and wire*
- *Wide web for additional strength*

Part No.	Chair Height / Rebar Size	Box Count	Skid Count	Boxes per Skid
RWC-010-L	1" Locking Wheel	1,250	30,000	24
RWC-015-L	1.5" Locking Wheel	500	10,000	20
RWC-020-L	2" Locking Wheel	250	5,000	20
RWC-030-L	3" Locking Wheel	125	2,500	20

HD Locking Wheel Chair

Part No.	Chair Height / Rebar Size	Box Count	Skid Count	Boxes per Skid
RWC-30L-HD	3" Locking Wheel	57	1,140	20



Push-on Wheel Chairs

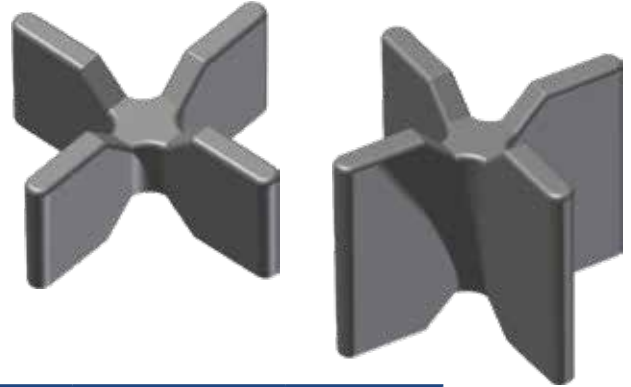
- *Four height options available*
- *1", 1½", 2" & 3" cover height*
- *Chairs will accept #3 and #6 wire*
- *Constructed out of a durable non-corrosive plastic*
- *Rods snap easily into chairs*



Part No.	Chair Height	Rebar Size	Box Count	Box Weight	Skid Count	Skid Weight	Boxes per Skid
RWC-010	1"	Wire #3	1,500	33 lbs	30,000	660 lbs	20
RWC-0125	1.25"	Wire #3 & #6	1,200	32 lbs	24,000	650 lbs	20
RWC-015	1.5"	Wire #3 & #6	700	32 lbs	14,000	640 lbs	20
RWC-020	2"	Wire #3 & #6	400	26 lbs	8,000	520 lbs	20
RWC-030	3"	Wire #3 & #6	170	24 lbs	3,400	480 lbs	20

X - Chairs

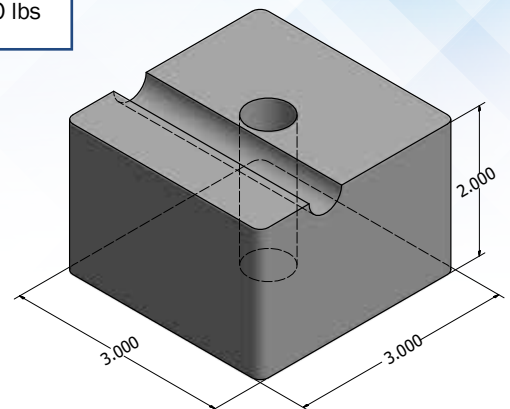
- *Non-corrosive durable plastic construction*
- *½", ¾", 1", 1½", 2" cover height*
- *Accepts #3 - #6 rebar*
- *1,400 lbs capacity*
- *100% Recycled Plastic*
- *Made in Canada*

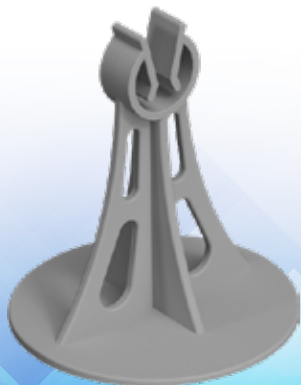


Part No.	Chair Height	Rebar Size	Bag Count	Bag Weight	Skid Count	Skid Weight	Bags per Skid
RCX-05	0.5"	#3 - #6	2,000	20.2 lbs	128,000	1,293 lbs	64
RCX-075	0.75"	#3 - #6	1,500	20.6 lbs	96,000	1,318 lbs	64
RCX-10	1"	#3 - #6	750	16.2 lbs	48,000	1,036 lbs	64
RCX-15	1.5"	#3 - #6	400	16.2 lbs	25,600	1,036 lbs	64
RCX-20	2"	#3 - #6	350	16.2 lbs	22,400	1,036 lbs	64

Concrete Dobies

Part No.	Chair Size	Chair Type	Qty	MPA	Skid Count	Skid Weight
CON-23	3" x 3" x 2"	with wire hole	7 piece	65 MPA	1,500	2,000 lbs
CON-34	4" x 4" x 3"	no wire hole	1 piece	65 MPA	792	3,400 lbs





Mesh Chairs

- 1", 1½", 2" & 3" cover height / 350 lbs capacity
- Accepts 1/8" - 3/8" (3mm - 10mm) mesh
- Non-corrosive durable plastic construction
- Rods snap easily into chairs
- Clips will not change shape and will provide uniform concrete cover



Part No.	Chair Height	Rebar Size	Box Count	Box Weight	Skid Count	Skid Weight	Boxes per Skid
TMC-100	1"	3/8"	1,600	7.2 lbs	48,000	461 lbs	30
TMC-150	1.5"	3/8"	1,000	6.3 lbs	30,000	529 lbs	30
TMC-200	2"	3/8"	800	7.2 lbs	24,000	461 lbs	30
TMC-300	3"	3/8"	500	11.8 lbs	15,000	755 lbs	30



Rebar Tie Wire

- 3-1/8lb x 16.5 Gauge Black
- Flexible and rust resistant
- Specially annealed to be soft and easy to twist, yet is strong enough to securely tie concrete reinforcement bars or welded wire fabric
- Box of 16 rolls or Skid of 48 boxes

Concrete Curing Blanket

- 12ft*24ft pc / 12ft*24ft Skid of 13
- 5mm layer thickness
- Orange cover / Insulated tarp
- 80g
- Grommets 24" on center





BA Concrete Products is a premier manufacturer of plastic bar supports. We supply concrete construction resources across Canada and the USA. Our team designs and manufactures products at our modern facility located near Winnipeg, Canada.

We currently stock our products in Calgary, Winnipeg, and Toronto to provide timely service to the North American construction industry.



SCAN HERE TO ORDER www.baproducts.ca 204.252.2333





ALBERTA



8516 - 40 Street SE.
Calgary, AB T2C 2P2
ph: 403-819-9859
E-mail: luke@betterair.ca

WINNIPEG



Box 490 MacGregor, MB
R0H 0R0 CANADA
ph: 204.252.2333
E: sales@betterair.ca



SCAN HERE TO ORDER
www.baproducts.ca

